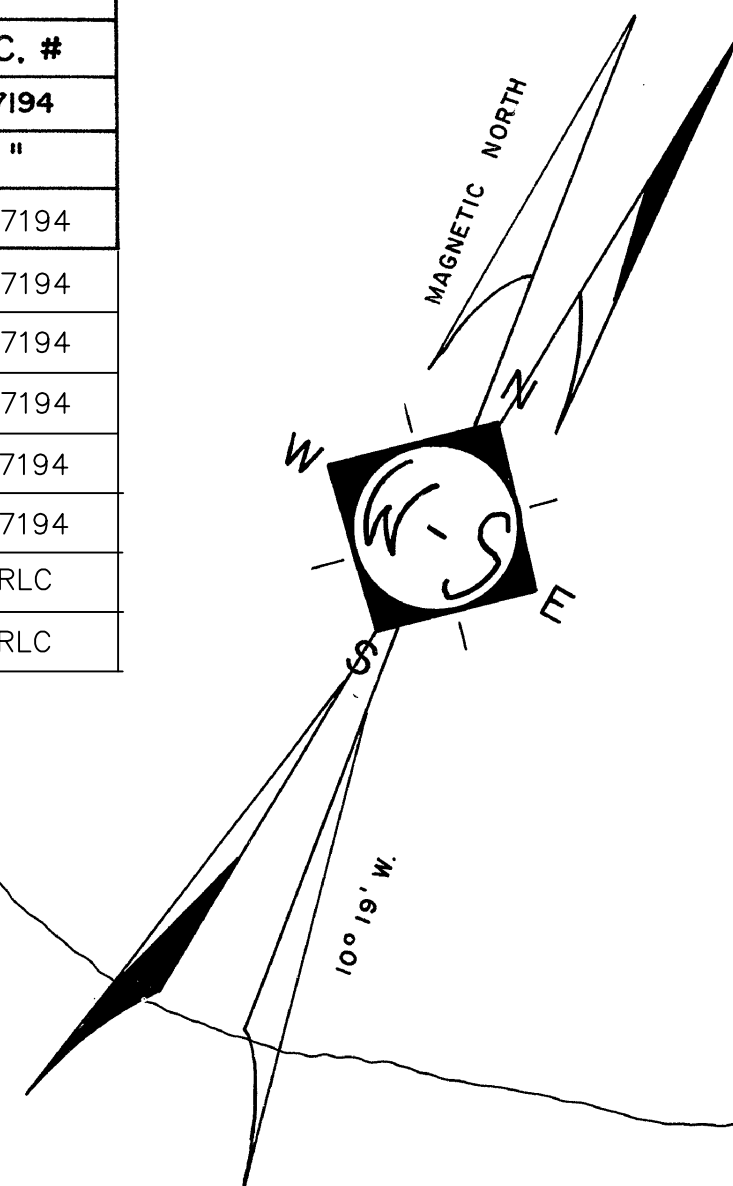


REVISIONS		
DATE	NAME	LIC. #
12-1-92	WILLIAM C. BURKETT, JR.	27194
7-2-93	" " " "	"
5/2001	WILLIAM C. BURKETT, JR.	27194
10/2002	WILLIAM C. BURKETT, JR.	27194
4/2003	WILLIAM C. BURKETT, JR.	27194
5/2005	WILLIAM C. BURKETT, JR.	27194
2/2007	WILLIAM C. BURKETT, JR.	27194
8/2007	WILLIAM C. BURKETT, JR.	27194
02/2010	MUNICIPAL ENGINEER	RLC
10/2010	MUNICIPAL ENGINEER	RLC



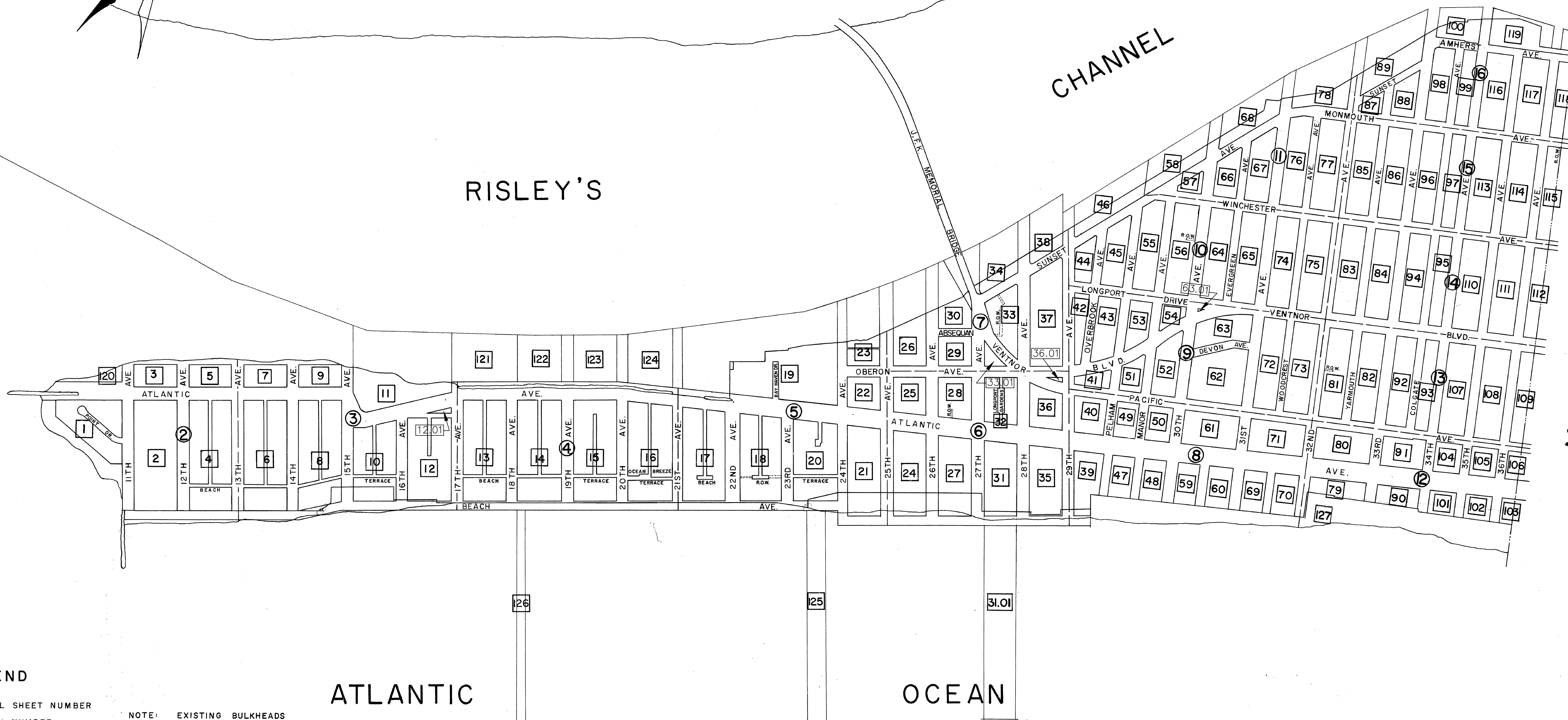
EGG HARBOR TOWNSHIP

RISLEY'S

CHANNEL

GREAT EGG HARBOR INLET

MARGATE CITY



LEGEND

- DETAIL SHEET NUMBER
- BLOCK NUMBER
- SHEET LIMIT

NOTE: EXISTING BULKHEADS AND SEAWALLS REPRESENT HIGH WATER LINE UNLESS OTHERWISE INDICATED.

REVISIONS

REV-DEC. 1971
REVISED FEB. 1973
REVISED APRIL, 1982

THE BOUNDARIES AND DIMENSIONS SHOWN ON THIS TAX MAP ARE DERIVED FROM GROUND SURVEYS, AERIAL SURVEYS, AND RECORD PLANS, MAPS, DEEDS, AND WILLS AND ARE TO BE USED FOR ASSESSMENT PURPOSES ONLY.

ELECTRONIC COPY

DANIEL J. PONZIO SR.
NEW JERSEY LIC. #GS37603
TO SHOW CONDITIONS AS OF JUNE, 2017

THIS TAX MAP SUPERSEDES THE TAX MAP DATED 1949 (NOT APPROVED).

I HEREBY CERTIFY THAT THIS MAP HAS BEEN MADE UNDER MY IMMEDIATE SUPERVISION, AND COMPLIES WITH THE LAWS OF THE STATE OF NEW JERSEY.

Thomas Wood, Jr.
P.E. & L.S. LIC. NO. 8139

ELECTRONIC COPY

WILLIAM C. BURKETT, JR. P.L.S.
NEW JERSEY LIC. #27194

TO SHOW CONDITIONS AS OF JANUARY, 2010

NEW JERSEY DEPARTMENT OF THE TREASURY
DIVISION OF TAXATION
PUBLIC UTILITY TAX BUREAU
APPROVED AS A TAX MAP PURSUANT TO THE PROVISIONS OF CHAPTER 116, LAWS OF 1918, ETC. FOR THE DIRECTOR, DIVISION OF TAXATION.
W. C. Burkett, Jr. P.E. & L.S. #27194
DATE: DEC - 8 1970 SERIAL No. 498

TAX MAP
OF THE
BOROUGH OF LONGPORT
ATLANTIC COUNTY, N. J.

SCALE: 1" = 300' 1970
J. THOMAS WOOD, JR., P.E. & L.S. NO. 8139
GEORGE E. SCHILLING, L.S. NO. 16198
421 GUARANTEE TRUST BLDG.
ATLANTIC CITY, N. J.
TO SHOW CONDITIONS AS OF DECEMBER 1992