

ADJOINS SHEET 3

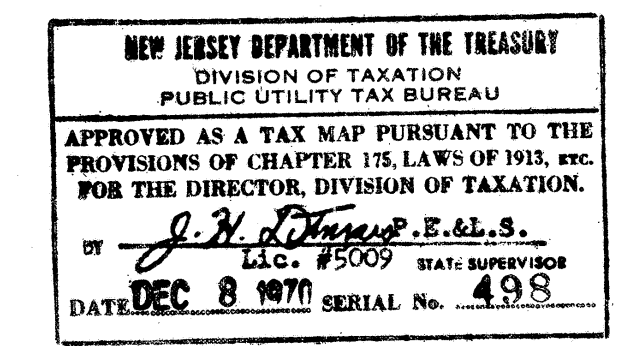
ADJOINS SHEET 5

DATE	REVISION	BY
6/2017	BLOCK 15 LOTS 1.01, 1.02	PER DC
11/2014	BLOCK 15 LOTS 1.01, 1.03 PER T.A.	M. ENG
8/2007	BLOCK 13, LOT 3.01 TO LOT 3.1 PER T.A.	M. ENG
2/2007	BLOCK 13, LOT 9 - SUBDIVISION	M. ENG
2/2006	BLOCK 15, LOT 2 - SUBDIVISION	M. ENG
5/2005	BLOCK 13 LOTS 1.01 & 2, PER ASSESSOR	MARK ENGIN
5/2005	BLOCK 13 LOTS 5 & 6, PER ASSESSOR	MARK ENGIN
7/1/93	BLOCK 16 PER ASSESSOR	CBA
12-1-92	GENERAL - PER N.J. DEPT. OF TREASURY	CBA
12/26/91	BLOCK 16, PER ASSESSOR	CBA
12-26-91	BLOCK 15, PER ASSESSOR	CBA
10-5-90	BLOCK 15, LOT 10 MINOR SUBDIVISION	DECO
10-5-90	BLOCK 15, LOT 1 MINOR SUBDIVISION	DECO
10-5-90	BLOCK 14, LOT 18 CORRECT DIMENSION	DECO
10-5-90	BLOCK 14, LOT 1 MINOR SUBDIVISION	DECO
10-5-90	BLOCK 13, LOT 13.01, 21.01 MIN. SUBD.	DECO

ATLANTIC  
EXTERIOR LINE EST. BY BOARD OF RIPARIAN COMMISSIONERS

401  
126  
EXTERIOR LINE EST. BY BOARD OF RIPARIAN COMMISSIONERS

ELECTRONIC COPY  
DANIEL J. PONZIO SR.  
NEW JERSEY LIC. #GS37603  
TO SHOW CONDITIONS AS OF JUNE, 2017



**TAX MAP**  
OF THE  
**BOROUGH OF LONGPORT**  
ATLANTIC COUNTY, N.J.  
SCALE: 1" = 50' 1970  
REV. JAN. 1984  
J. THOMAS WOOD, JR., P.E. & L.S. NO. 8139  
GEORGE E. SCHILLING L.S. NO. 16198  
421 GUARANTEE TRUST BLDG.  
ATLANTIC CITY, N.J.